

thinline

la doga+sottile del mondo the thinnest slat in the world



thinline

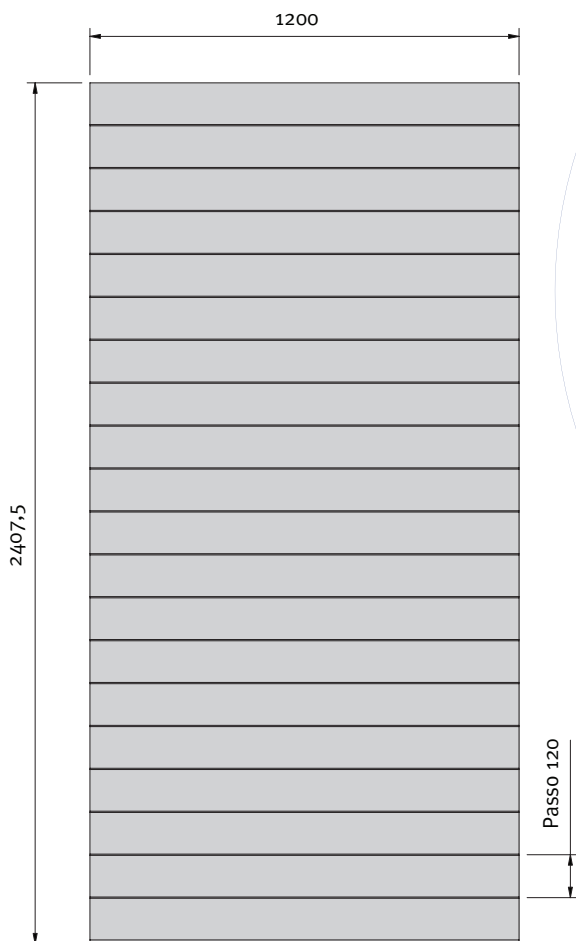
la doga + sottile del mondo



Con Thinline il classico pannello a doghe acquista forza ed eleganza espressiva divenendo un vero e proprio elemento di arredo.

Grazie alla fresata da 3,5 mm, il sistema consente tutte le funzioni richieste ad una parete attrezzabile, con il valore aggiunto di una eleganza minimale sottolineata dalla scomparsa degli inserti metallici all'interno della doga.

THINLINE, THE THINNEST SLAT IN THE WORLD. With Thinline the traditional slatted panel gets so resistant, elegant and expressive that it becomes a real furnishing element; thanks to the ingenious millings of 3,5 mm, this system permits all the functions requested to a modular wall, with the added value of minimalistic elegance pointed up by the absence of the metal elements inside the slat.



Ks

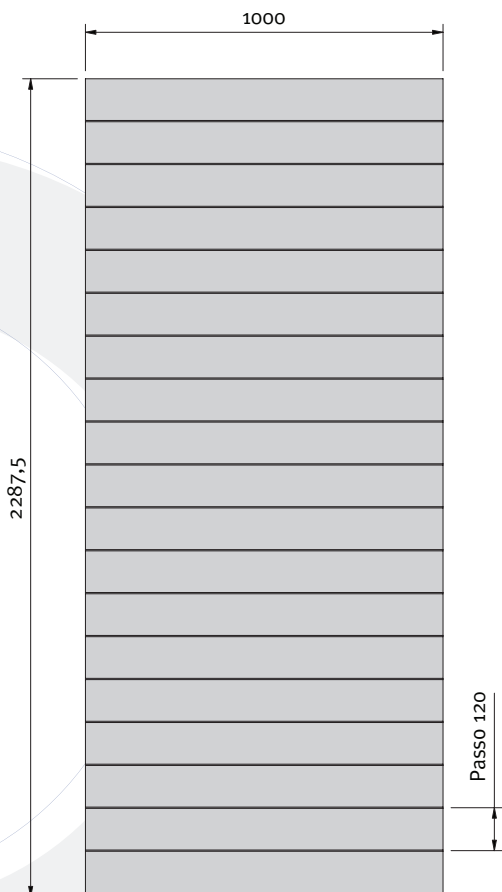


Il pannello Thinline, nella versione KS (King Size) viene proposto nel formato maxi di mm 2407 x 1200 ed è disponibile in 6 colori di melamminico.

The Thinline panel, in the KS version (King Size), is provided in the big size mm 2407 x 1200 and it is available in 6 colours of the melamine chart.

melamminici Ks melamminici Ks





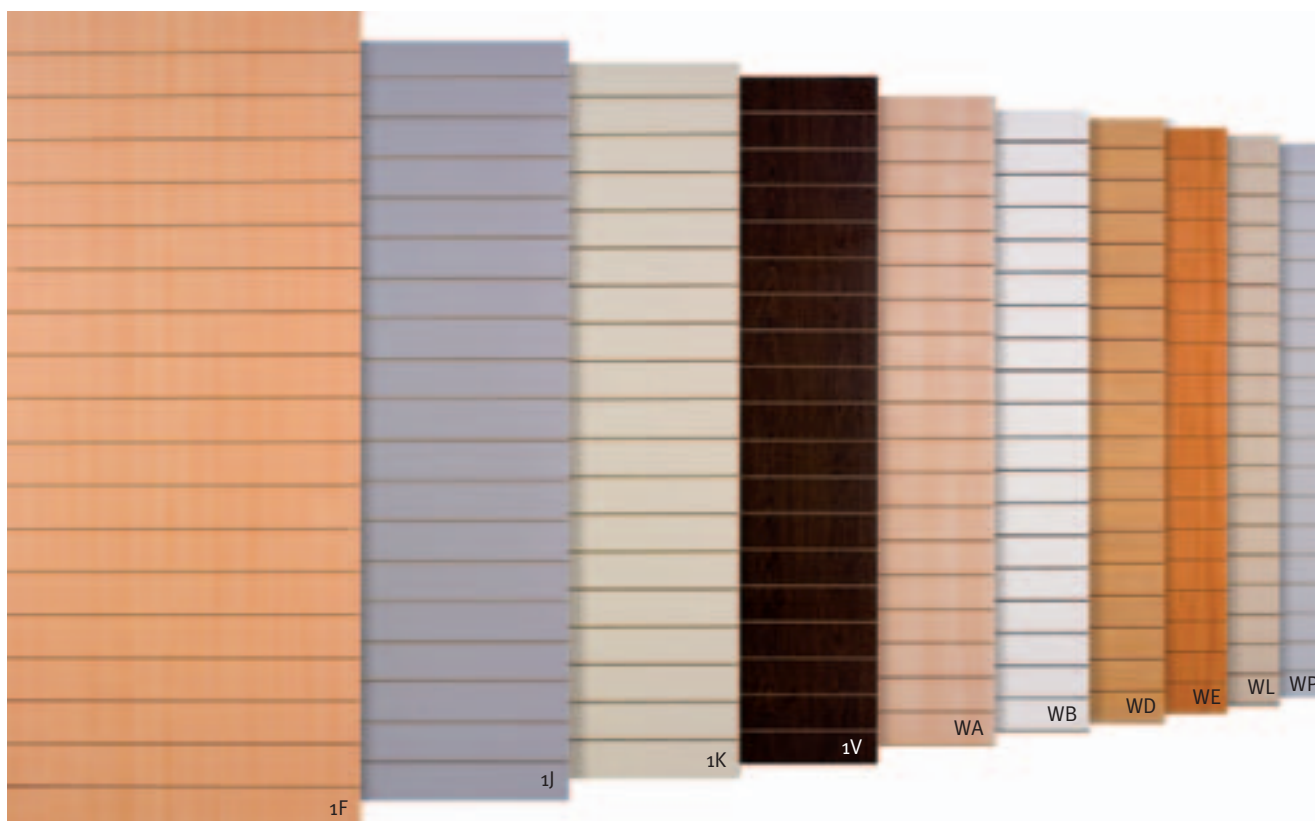
Qs



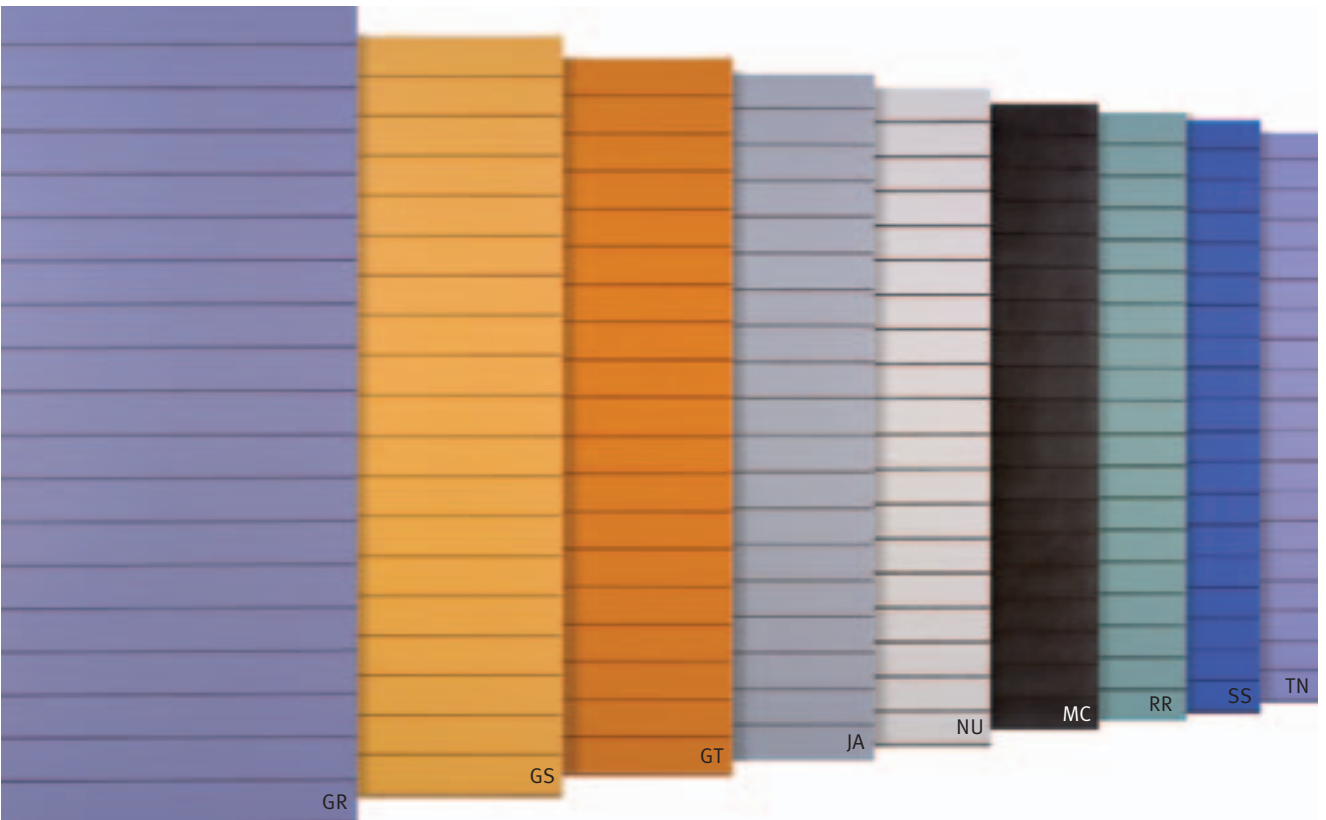
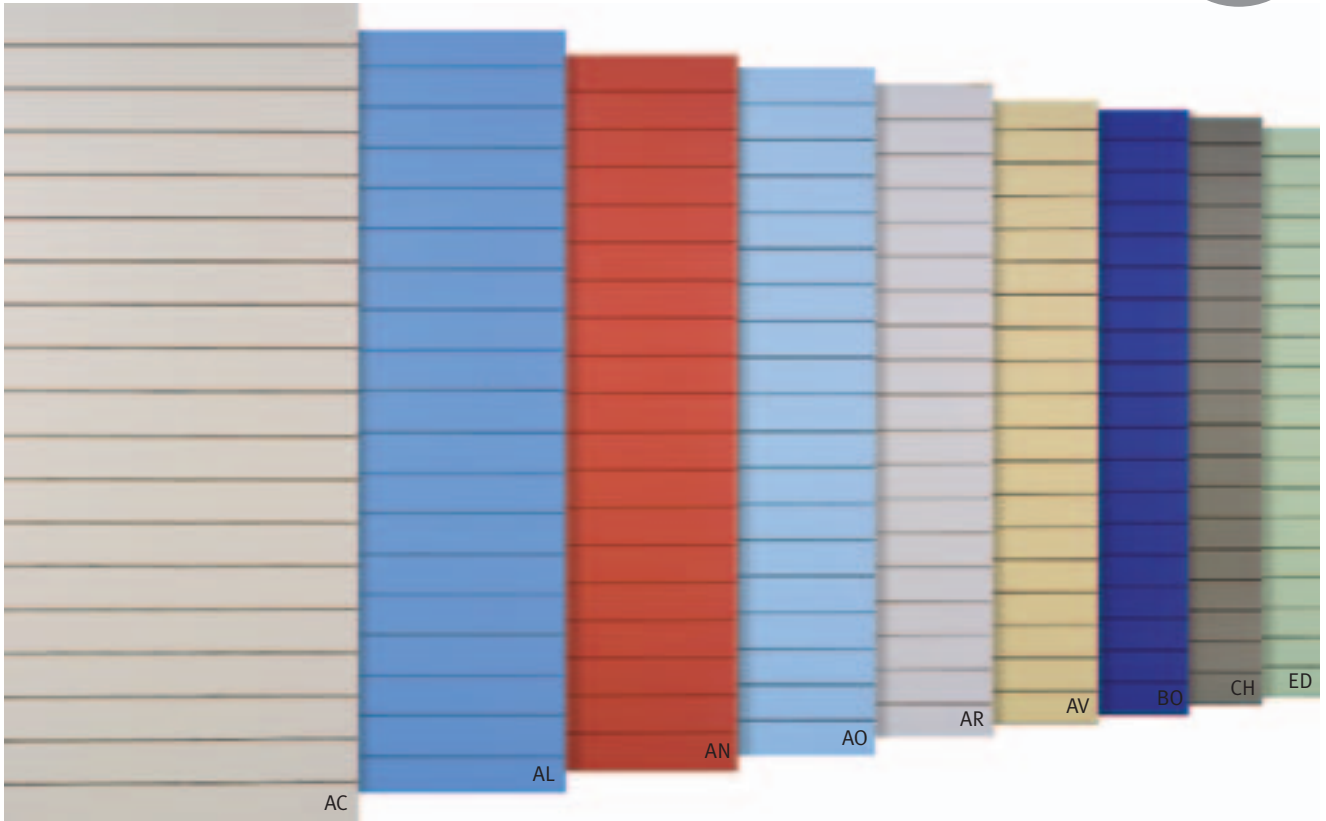
Il pannello Thinline nella versione QS (Queen Size), è proposto nel formato di mm 2287 x 1000 ed è disponibile nei 10 colori di melamminico.

The Thinline panel, in the QS version (Queen Size), is provided in the size 2287 x 1000 and it is available in 10 colours of the melamine chart.

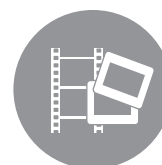
melamminici Qs melamminici Qs



verniciati varnished



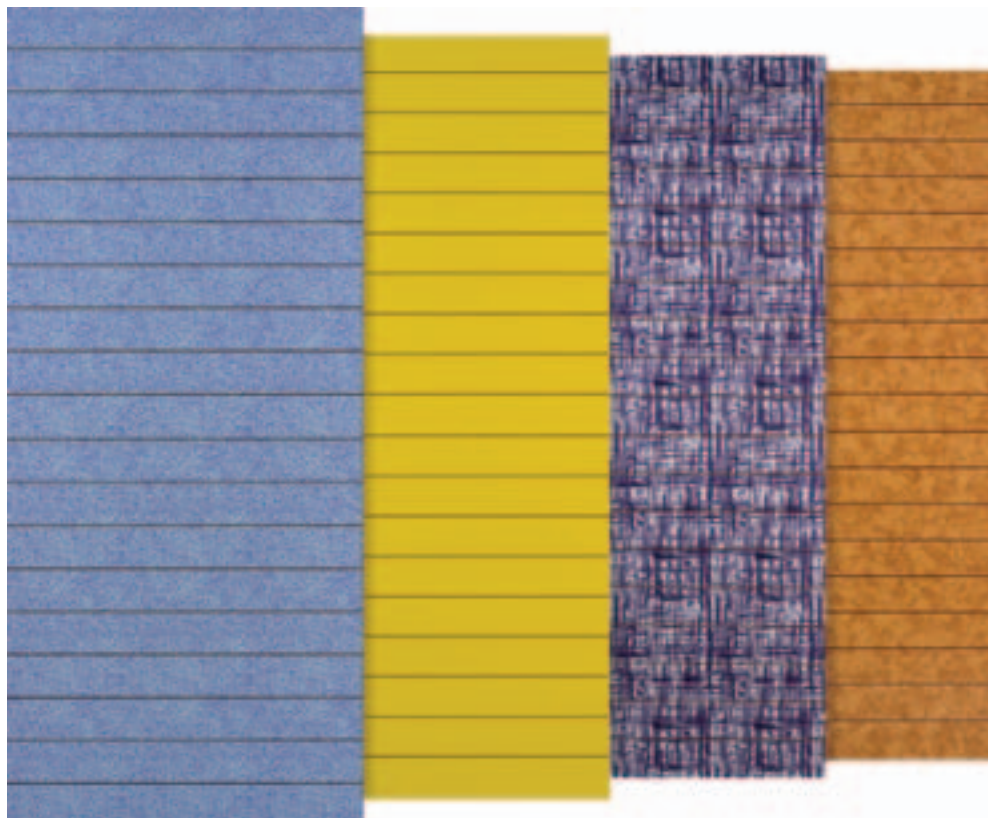
stampa digitale digital print



È possibile effettuare una stampa digitale che riproduce immagini e comunicazioni pubblicitarie direttamente sul pannello. Grazie alle dimensioni ridotte delle fresature, il progetto grafico iniziale non viene minimamente alterato.

It is possible to provide a digital print of an image or an advertisement on the panel. Due to the small dimensions of the grooves, the original graphic project is not at all altered.

laminati laminates

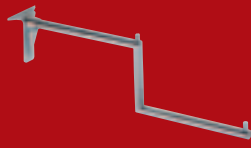


Viene offerta la possibilità di rivestire i pannelli Thinline, sia nella versione KS che QS, con i laminati contenuti nella mazzetta ABET Print divisi nelle tipologie tinte unite, serie legni e serie metalli.

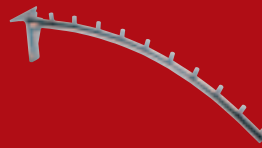
It is offered the chance to coat the Thinline panels, either in KS or QS version, with the laminates included in the ABET Print colour chart, divided into three finishes: plain colour, wood and metal.

thinline accessori elite elite accessories

cromo lucido shiny chrome



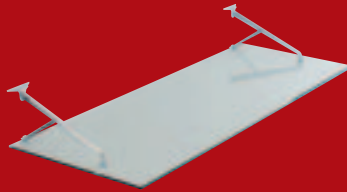
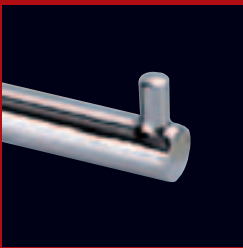
gancera frontale a due livelli
two level frontal hook rack



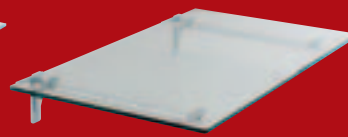
gancera frontale inclinata
inclined frontal hook rack



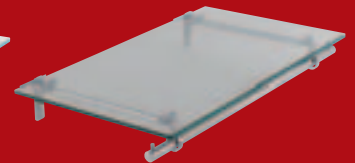
gancera frontale diritta
frontal hook rack



mensola a bilanciere con piano in vetro
balance-lever bracket with glass top

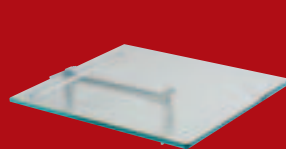


mensole con piano in vetro
bracket with glass top

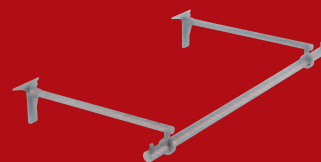


mensole con piano in vetro e tubo appenderia
bracket with glass top and hanging tube

La nuova serie di accessori Elite è stata realizzata con un design innovativo partendo da un attacco in pressofusione di alluminio con il quale è stata realizzata l'intera gamma.

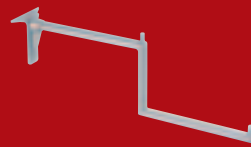
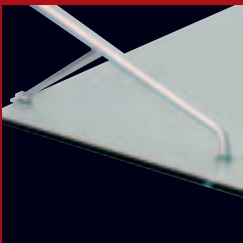


mensola singola con piano in vetro
single bracket with glass top

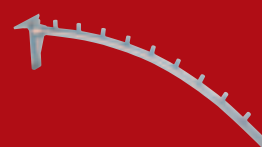


gancera longitudinale
longitudinal hook rack

nichel perla nickel pearl



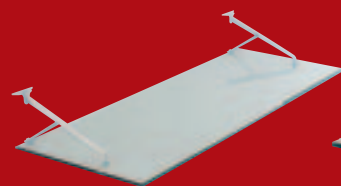
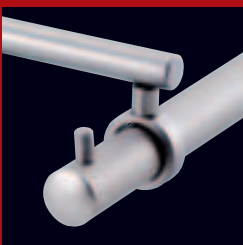
gancera frontale a due livelli
two level frontal hook rack



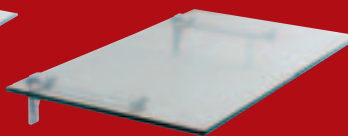
gancera frontale inclinata
inclined frontal hook rack



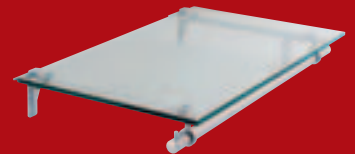
gancera frontale diritta
frontal hook rack



mensola a bilanciere con piano in vetro
balance-lever bracket with glass top

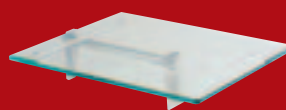


mensole con piano in vetro
bracket with glass top

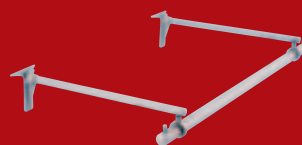


mensole con piano in vetro e tubo appenderia
bracket with glass top and hanging tube

The series of accessories Elite is a new product based on an innovatory pressure die casting aluminium attachment, which forms part of the whole range.

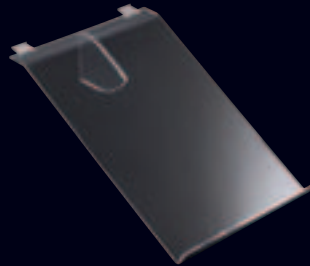
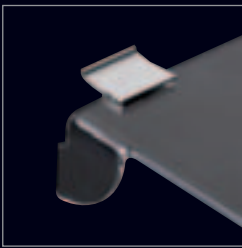
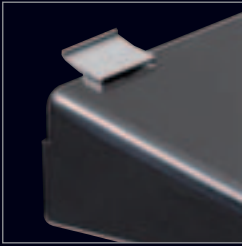


mensola singola con piano in vetro
single bracket with glass top

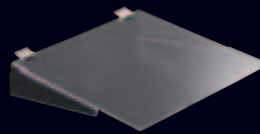


gancera longitudinale
longitudinal hook rack

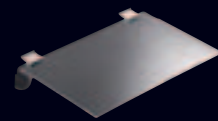
thinline accessori metacrilato methacrylate accessories



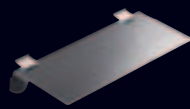
pianetto portacamicie
shirt-holder top



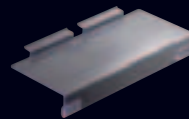
pianetto con rinforzi laterali
top with lateral reinforcement



pianetto semplice
top



pianetto semplice
top



pianetto con portaprezzo
top with price-holder



portacellulare
mobile phone-holder

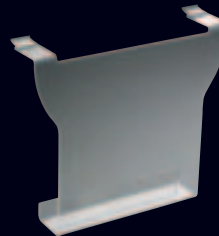
Questi accessori sono realizzati in metacrilato trasparente per non alterare l'effetto generale degli articoli esposti. La gamma comprende pianetti con portaprezzo per l'esposizione delle calzature, articoli per telefonia ed elettronica ed espositori per occhiali.

These accessories made of acrylic do not affect the general look of the items displayed.

They range from shoes holders with price holder to telephony and electronics items, to display stands for glasses.



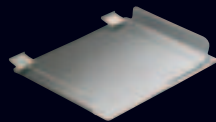
portascarpe girevole
rotating shoes-holder



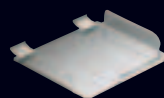
portariviste
magazine-holder



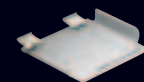
pianetto inclinato
inclined top



pianetto con alzate laterali
top with lateral raising



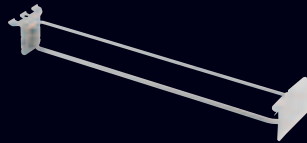
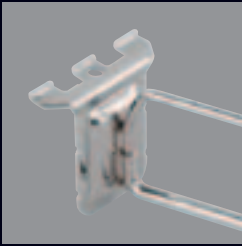
pianetto con alzate laterali
top with lateral raising



pianetto con alzate laterali
top with lateral raising

thinline accessori basic basic accessories

cromo lucido shiny chrome



gancio con portaprezzo
hook with price-holder



portaocchiali
glasses-holder



gancio con disco
hook with disk



gancera frontale dritta
frontal hook rack



gancera frontale inclinata
inclined frontal hook rack



gancio doppio con portaprezzo
duble hook with price-holder

La gamma di accessori Basic consente di soddisfare tutte le esigenze espositive, dai prodotti contenuti in blister ai capi d'abbigliamento.

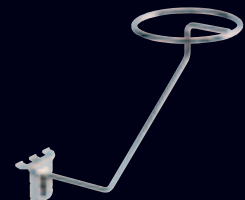
The range of accessories Basic complies with all the requirements of an exhibition area, from the items contained in blisters to clothing.



gancio doppio
double hook



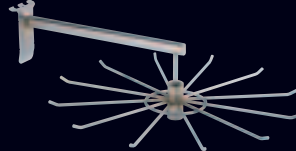
gancio semplice
simple hook



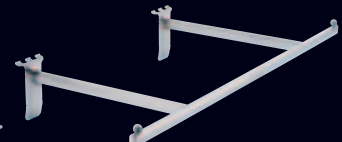
portacasco
helmet-holder



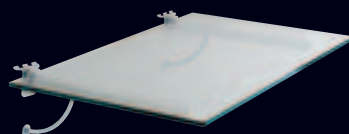
portapallone
ball-holder



espositore girevole
rotating exhibitor

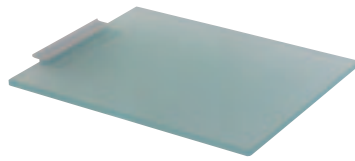
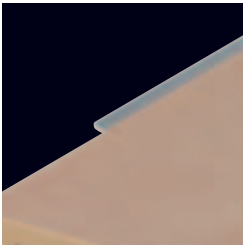
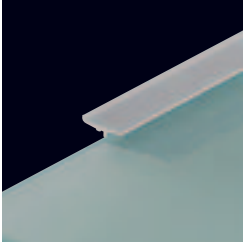


gancera longitudinale
longitudinal hook rack



mensola con piano in vetro
bracket with glass top

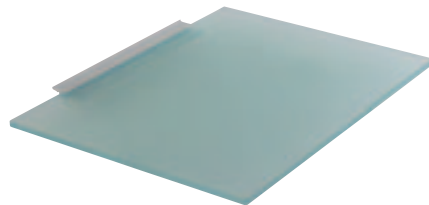
thinline ripiani tops



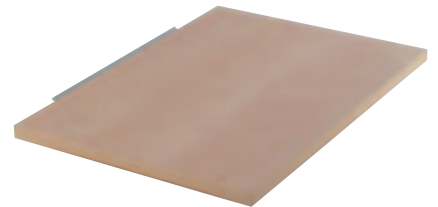
ripiano in vetro con profilo in alluminio
glass top with aluminium profile



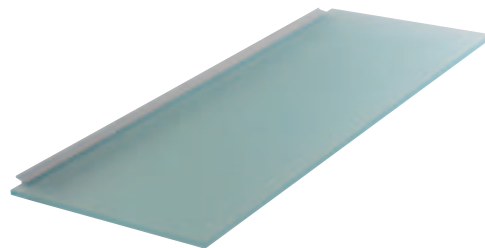
ripiano in legno con profilo in alluminio
wooden top with aluminium profile



ripiano in vetro con profilo in alluminio
glass top with aluminium profile



ripiano in legno con profilo in alluminio
wooden top with aluminium profile



ripiano in vetro con profilo in alluminio
glass top with aluminium profile



ripiano in legno con profilo in alluminio
wooden top with aluminium profile

I ripiani sono realizzati in melaminico con bordo ABS 18 mm e sono disponibili nelle 10 finiture per il melaminico incluse nella serie QS e nelle 18 tinte verniciate della cartella colori.

These tops in melamine have an ABS edge (thickness mm 18) and they are available in 10 finishes for melamine included in the QS series, besides the 18 varnishings of the colour chart.

thinline



Una delle caratteristiche innovative del pannello Thinline è la possibilità, a differenza del tradizionale pannello a doghe con inserto in alluminio, di poter effettuare operazioni di sagomatura, bordatura e verniciatura come un normale pannello.



One of the innovations of the Thinline panel is the possibility of being shaped, edged and varnished as a regular panel, unlike the old slatted panel with aluminium inserts.



thinline



thinline





I pannelli Thinline, grazie alle dimensioni ridotte delle loro fresature, non interferiscono con l'immagine generale prodotta dagli articoli in una superficie espositiva.

The small dimensions of the grooves of the Thinline panels do not distract the visitor's attention from the items displayed in the exhibition area.

stampato in italia printed in italy

© cean company

aprile 2007 2007 april

art direction **fri architetti**

progetto project **studio tecnico cean company**

graphic design **zagù associati**

foto photos **andrea franceschetti**

stampa print **grapho 5**

è vietata la riproduzione totale
o parziale del catalogo
senza previa autorizzazione
della Cean Company SpA

total or partial reproduction
of this catalogue is severely
prohibited without
previous permission
from Cean Company SpA



CEAN COMPANY S.P.A. VIA DAVIDE ALBERTARIO 3/A 61032 BELLOCCHI DI FANO (PU) ITALY
TEL. +39 0721 855 046, FAX +39 0721 855 554 WWW.CEANCOMPANY.IT INFO@CEANCOMPANY.IT

