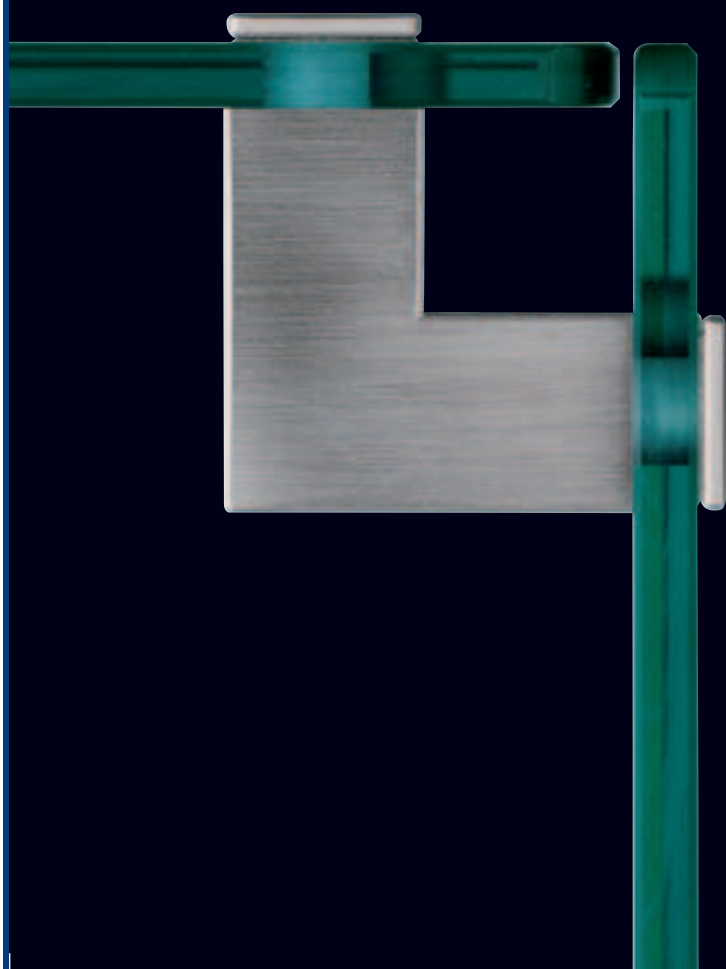


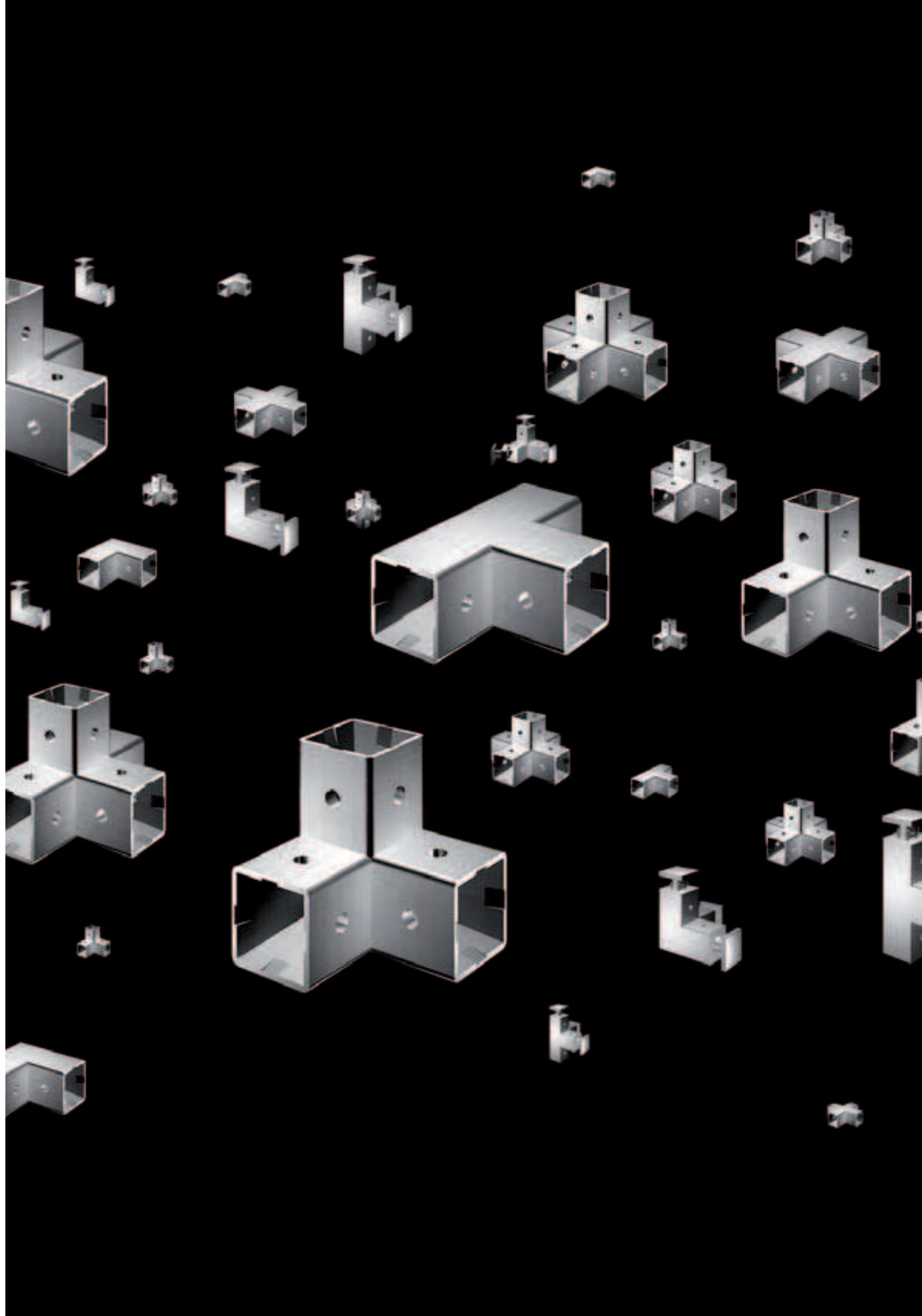
# tecnò

nodi per infinite soluzioni articulated joints for infinitive possibilities



**CEAN!**  
COMPANY

SHOPFITTING TECHNOLOGIES



**tecno.1**

**semplice, no?**



Sette nodi, un inserto di fissaggio ed un tubolare. Semplice, no?  
Con il sistema Tecno.1 si può allestire l'arredo completo di un negozio:  
mobili, vetrine, tavoli, gradinali, carrelli, attrezzature a parete e centrali per  
esporre e contenere qualsiasi merceologia.

**EASY, ISN'T IT?** Seven knots, a closing device and tubes. Easy,  
isn't it? Tecno.1 system permits to fit out a store completely: furnishings,  
showcases, counters, trolleys, equipped walls and stands able to display  
any kind of item.



## tecno.2

l'evoluzione continua...



Tecno.2 è il sistema che permette ai nodi, finora utilizzati esclusivamente per collegare i tubi, di essere impiegati come elementi portanti per assemblare vetrine e mobili in legno, anche di grandi dimensioni, trasformandoli in elementi di giunzione per fianchi, top e ante.

**EVOLUTION CONTINUES...** Tecno.2 is the system which permits knots, up to now simple connections to tubes, to become main elements of the assembly of showcases and wooden furniture, even of large dimensions, making them a real connecting system for sides, tops and doors.



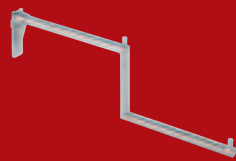
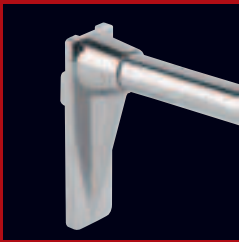
## cromo



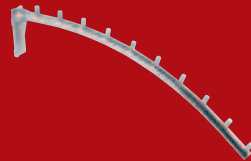
La finitura cromata conferisce alle strutture Tecno riflessi e giochi di luci scenografici.

CHROME The new chrome finish gives Tecno compositions glints and light effects.

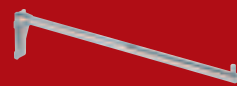




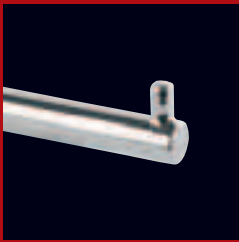
**gancera frontale a due livelli**  
two level frontal hook rack



**gancera frontale inclinata**  
inclined frontal hook rack



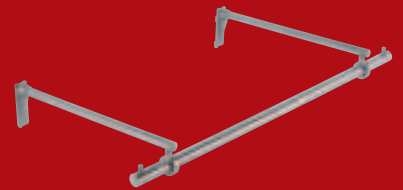
**gancera frontale diritta**  
frontal hook rack



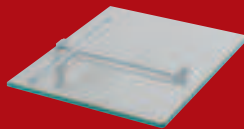
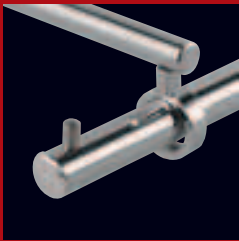
**gancera frontale diritta**  
frontal hook rack



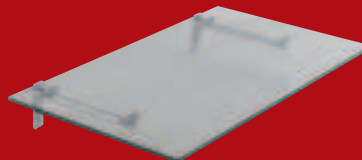
**gancera frontale diritta**  
frontal hook rack



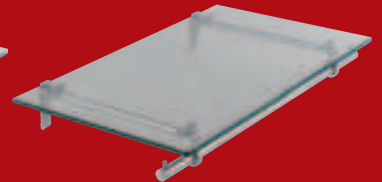
**gancera longitudinale**  
longitudinal hook rack



**mensola singola con piano in vetro**  
single bracket with glass top

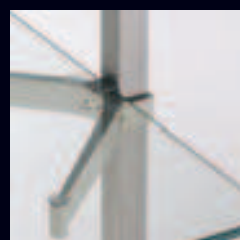


**mensole con piano in vetro**  
bracket with glass top



**mensole con piano in vetro e tubo appenderia**  
bracket with glass top and hanging tube

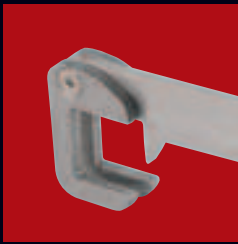
## inox



La classica finitura con tubo inox spazzolato, elegante ed inalterabile nel tempo.

**STEEL** This is the traditional brushed steel finish for tubes, elegant and unalterable.





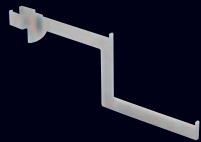
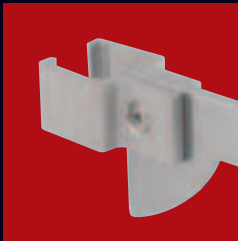
**gancera a due livelli tubo orizzontale**  
two level hook rack horizontal tube



**gancera diritta tubo orizzontale**  
frontal hook rack horizontal tube



**gancera inclinata tubo orizzontale**  
inclined hook rack horizontal tube



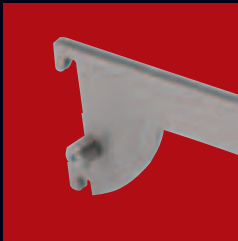
**gancera a due livelli tubo verticale**  
two level hook rack vertical tube



**gancera diritta tubo verticale**  
frontal hook rack vertical tube



**gancera inclinata tubo verticale**  
inclined hook rack vertical tube



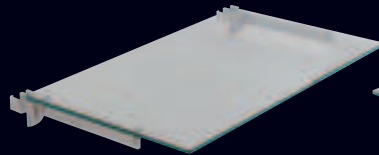
**gancera longitudinale tubo asolato**  
longitudinal hook rack slotted tube



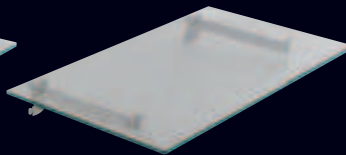
**gancera diritta tubo asolato**  
frontal hook rack slotted tube



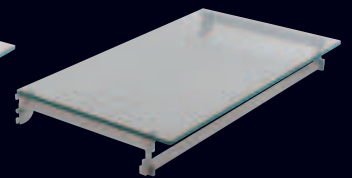
**gancera inclinata tubo asolato**  
inclined hook rack slotted tube



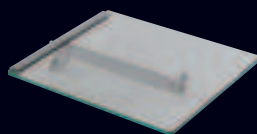
**mensola con piano in vetro tubo verticale**  
bracket with glass top vertical tube



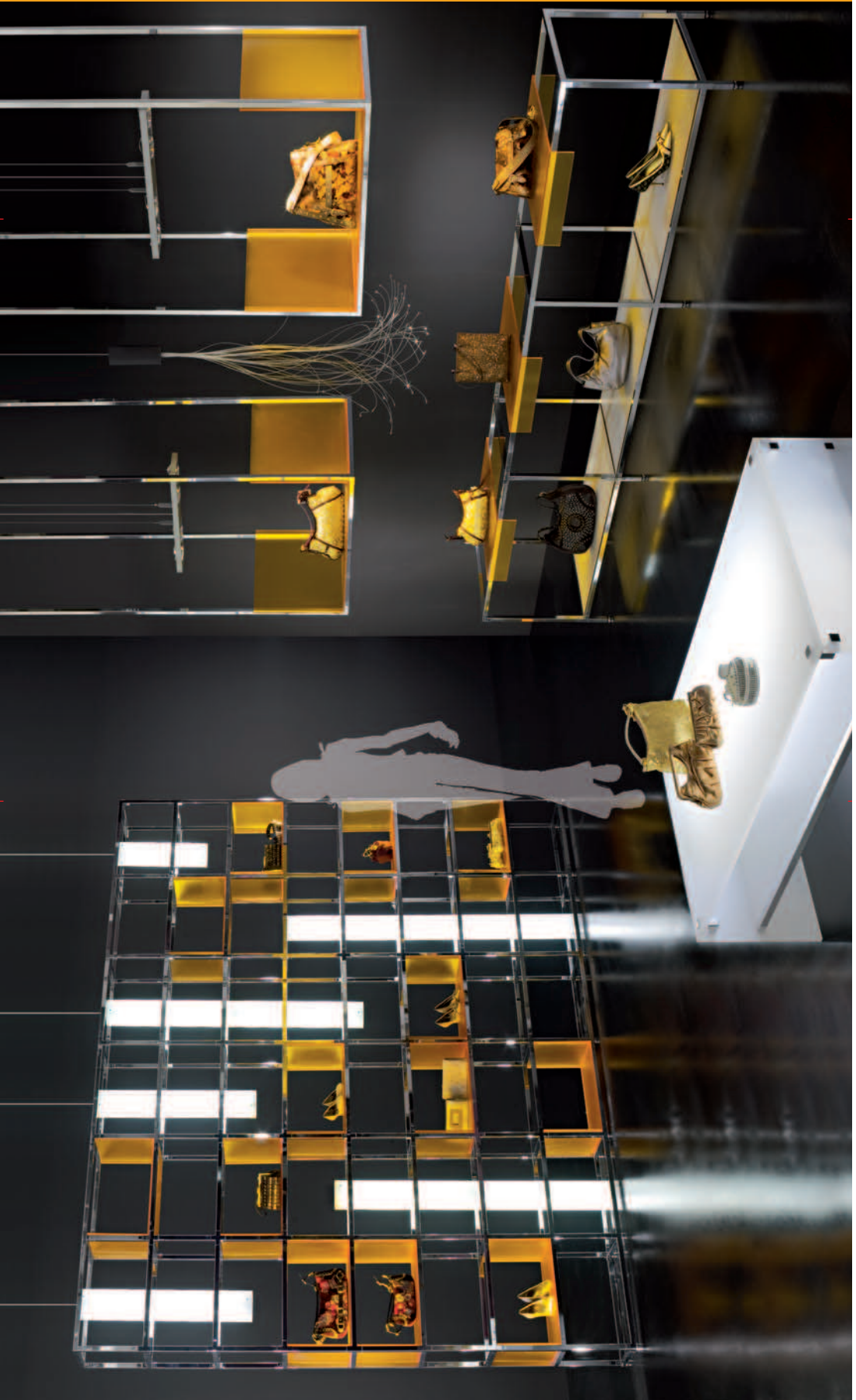
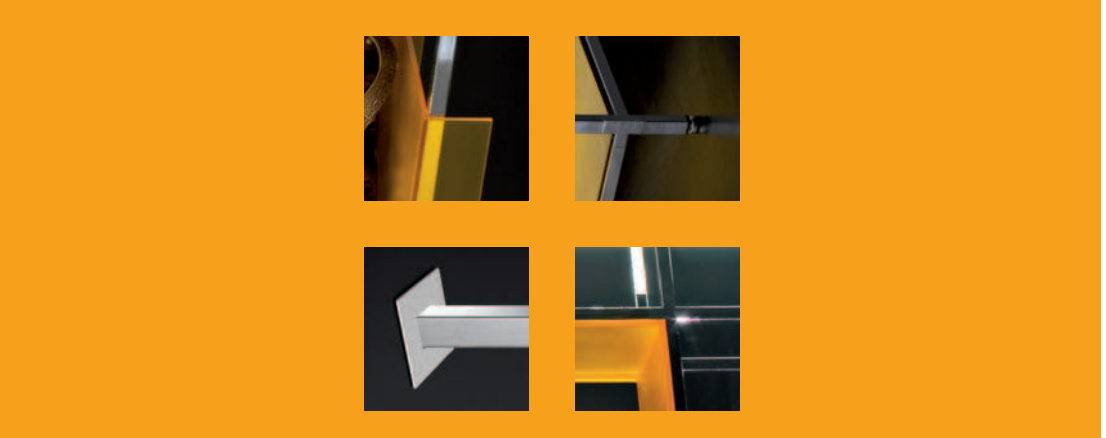
**mensola con piano in vetro tubo asolato**  
bracket with glass top slotted tube



**mensola con appenderia per tubo asolato**  
bracket with hanging for slotted tube



**mensola singola con piano per tubo asolato**  
single bracket with top for slotted tube







Ogni soluzione è predisposta per accogliere piani e tamponamenti, sia orizzontali che verticali, in vetro, legno o qualsiasi altro materiale si preferisce. Particolarmente utile risulta la possibilità di fissare il tubo a parete, permettendo l'allestimento del perimetro esterno del negozio nella maniera più pratica e vantaggiosa.

Every composition is arranged for horizontal and vertical pluggings and tops of glass, wood, etc... Particularly useful is the possibility of fixing tubes on walls, making their equipment functional and effective.



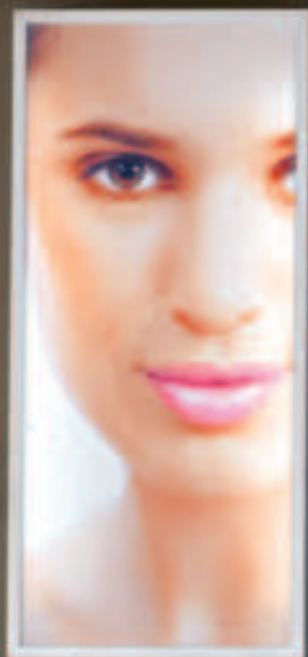
tecno



Nel settore abbigliamento il programma Tecno esprime la sua piena potenzialità, con una vastissima serie di accessori specificamente studiati per questo settore merceologico: appenderia, gancere inclinate e lineari, mensole.



Tecno items show their potential in the clothing sector, with a very large range of accessories specially made for these products: hanging elements, inclined and linear hook-racks and brackets.



eau de toilette

parfums



La flessibilità del programma Tecno consente di esporre qualsiasi tipo di merce e di allestire qualsiasi negozio seguendo le esigenze specifiche del settore di appartenenza. L'integrazione con gli altri prodotti Ceano, come in questo caso la serie Thinline, espande enormemente le soluzioni a disposizione dell'arredatore. L'unico limite è la fantasia.

The flexibility of Tecno products permits to display any sort of goods and fit out any shop in accordance with the requirements of its own product sector. By adding the other CEANO products, Thinline in this case, the designer is offered the chance to have endless solutions of fitting. The only limit is fantasy.

## tecno



Vetro e acciaio si fondono in un insieme omogeneo e dai contorni indefiniti. Al fine di offrire la massima flessibilità, gli elementi presenti a catalogo sono studiati per permettere l'integrazione tra elementi classici della serie Tecno.1 come le strutture tubolari, con elementi tipici della serie Tecno.2 quali volumi in vetro.

Glass and steel combine in a homogeneous unity. In order to obtain the highest flexibility, the items included in the catalogue have been studied to match Tecno.1 classic products, such as tubular frames, with Tecno.2 classic products made of glass.



I tubi asolati, presenti nelle finiture inox e cromata, permettono l'utilizzo di una serie di accessori estremamente pratici nel loro posizionamento.

Slotted tubes, with steel and chrome finishes, permit the use of a range of accessories easy to be used and positioned.

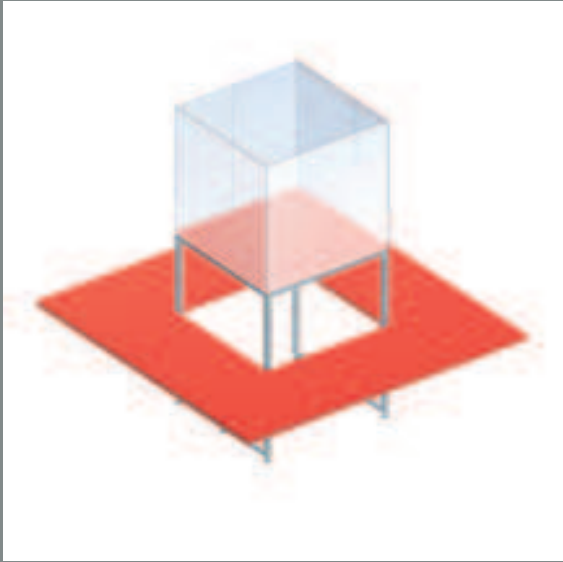
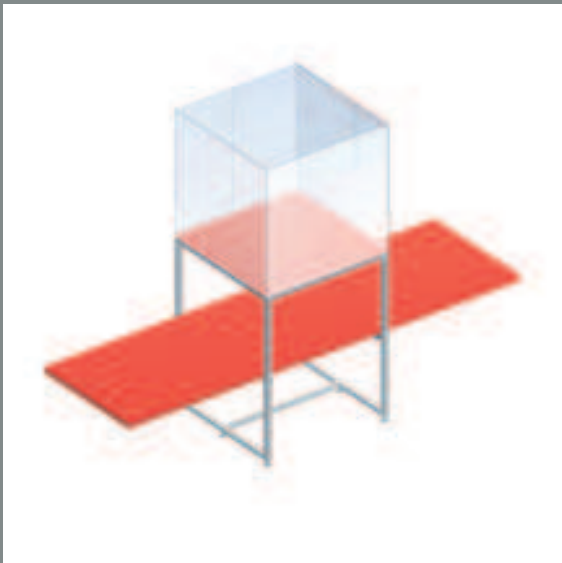


**tecno** banchi counters



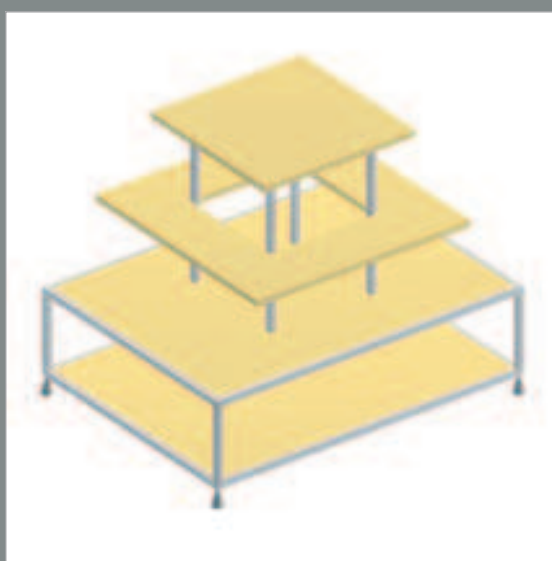
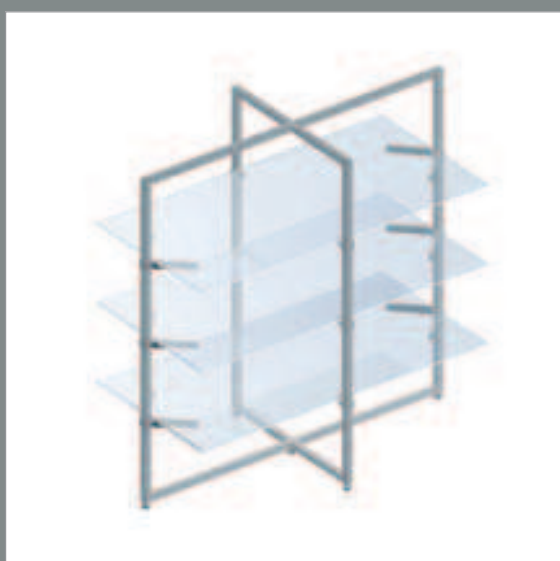
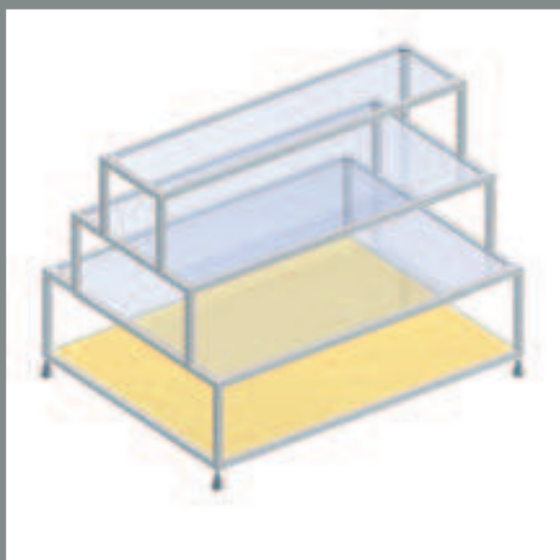
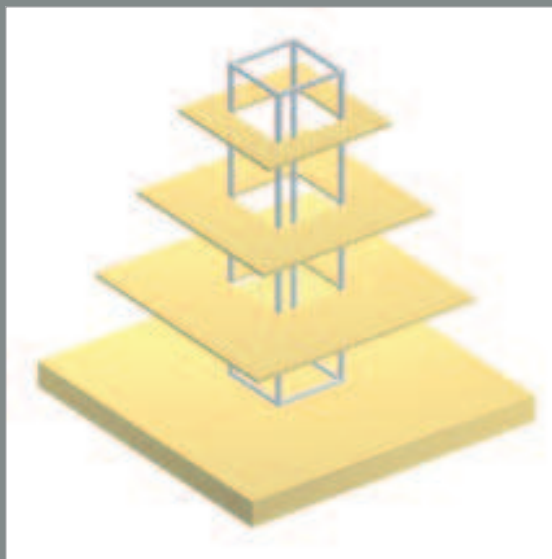
**esempi di utilizzo** examples of use

**tecno** bacheche glass cases



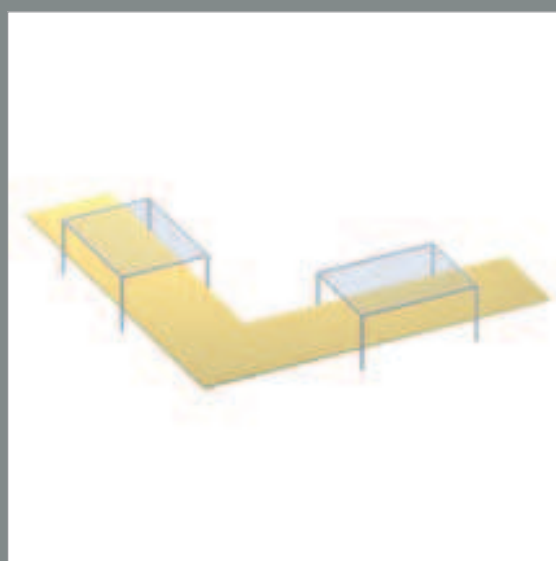
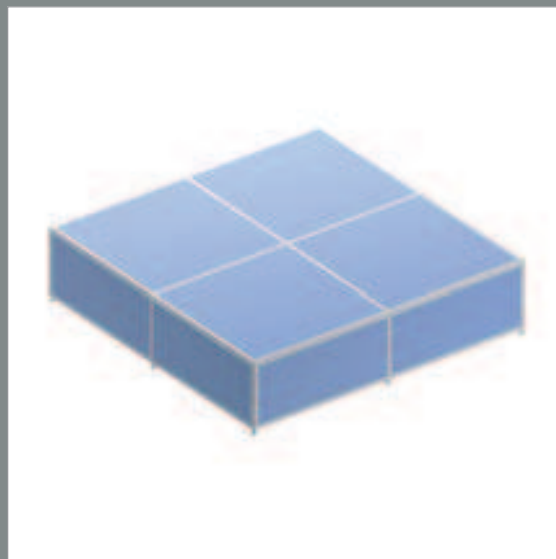
**esempi di utilizzo** examples of use

**tecno** espositori exhibitors



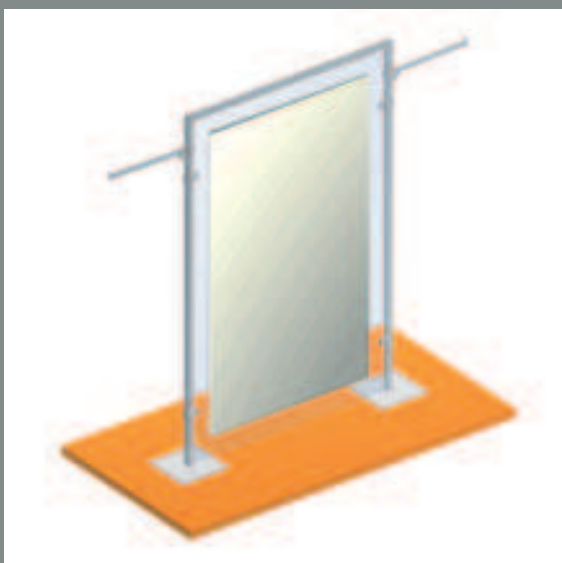
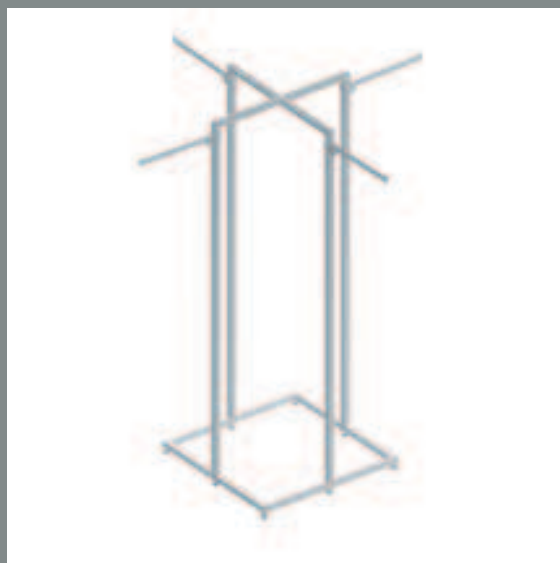
**esempi di utilizzo** examples of use

## tecno pedane boards



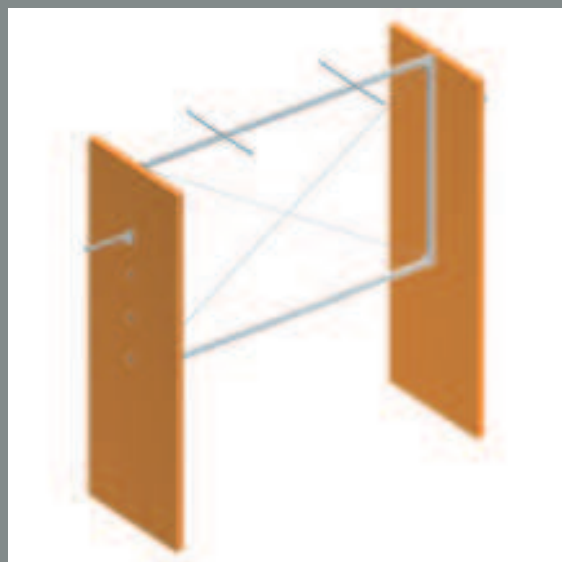
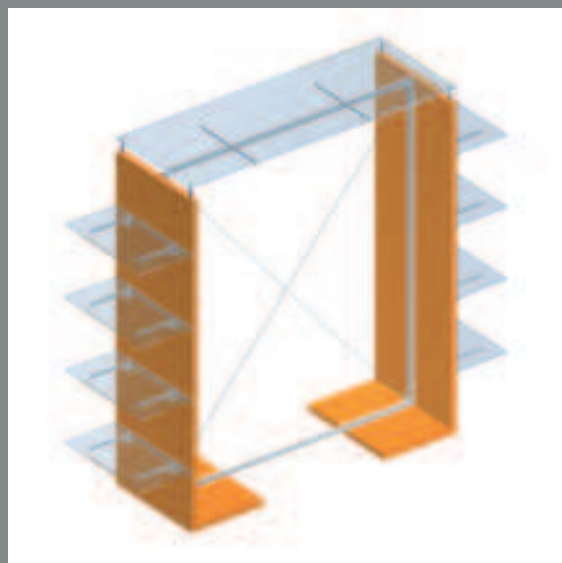
esempi di utilizzo examples of use

**tecno gondole gondolas**



**esempi di utilizzo examples of use**

# tecno gondole gondolas



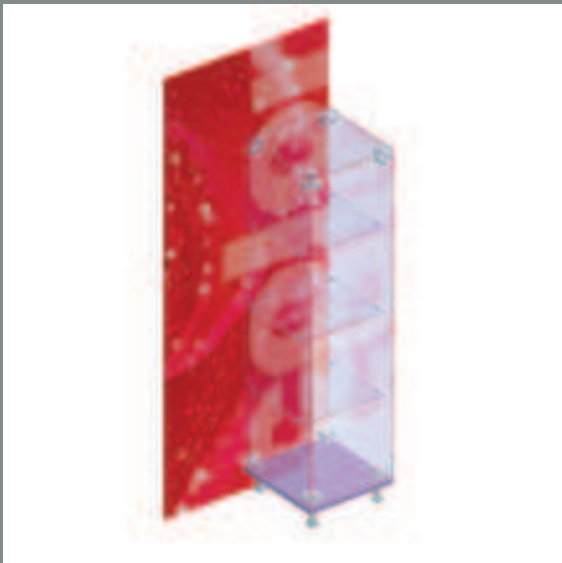
esempi di utilizzo examples of use

**tecno.1 vetrine showcases**



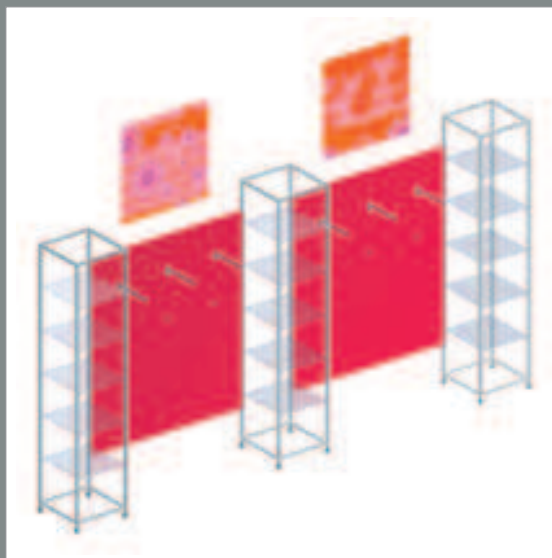
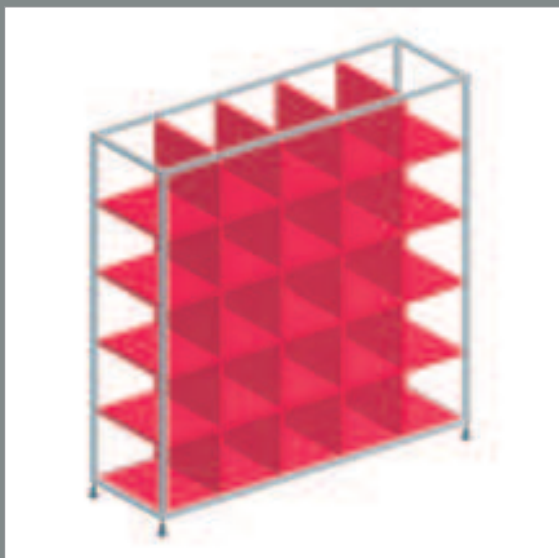
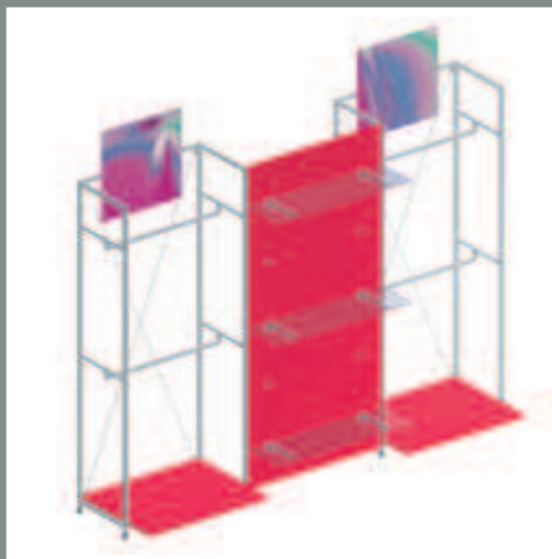
**esempi di utilizzo examples of use**

**tecno.2 vetrine showcases**



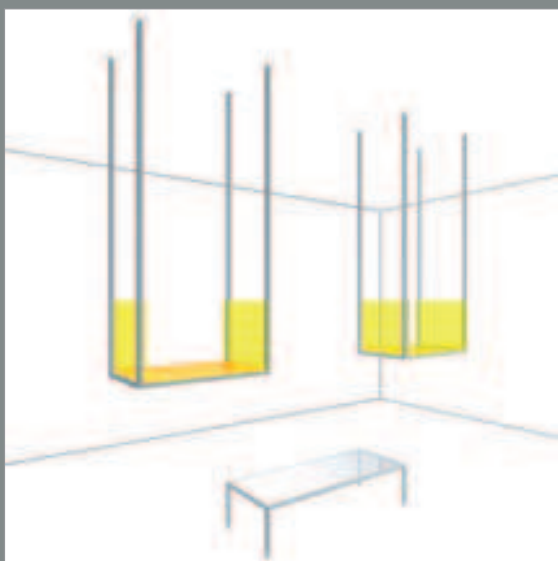
**esempi di utilizzo examples of use**

**tecno scaffali shelves**



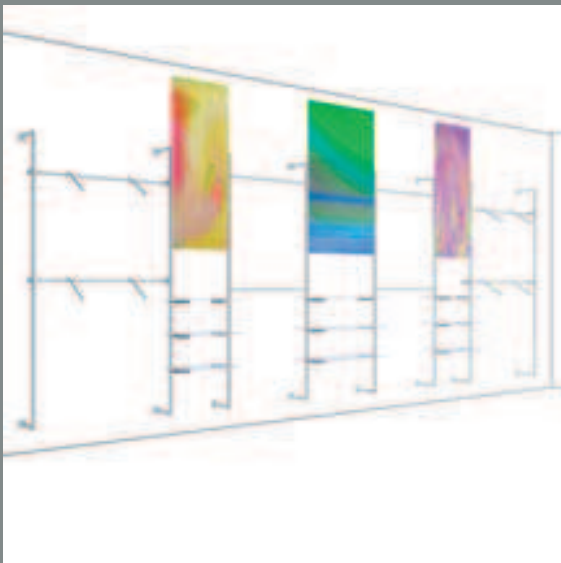
**esempi di utilizzo examples of use**

**tecno** strutture sospese suspended structures



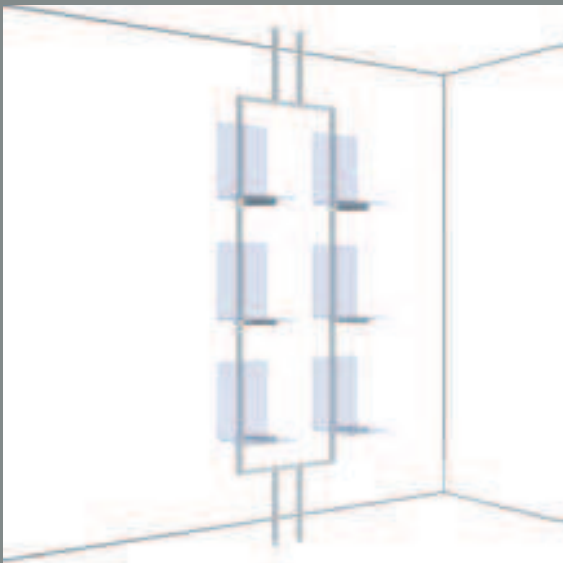
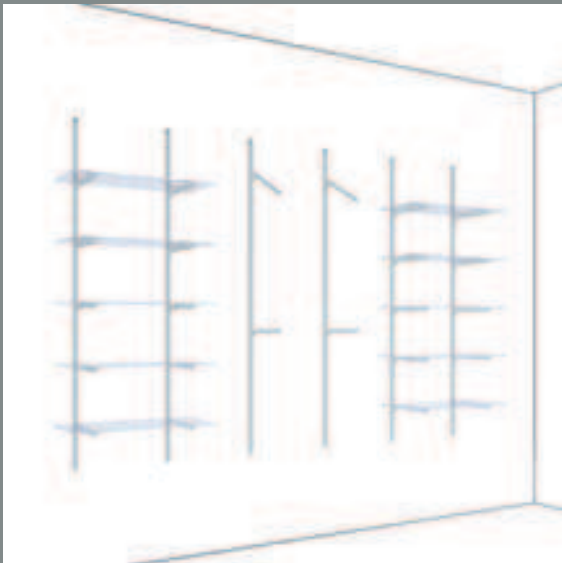
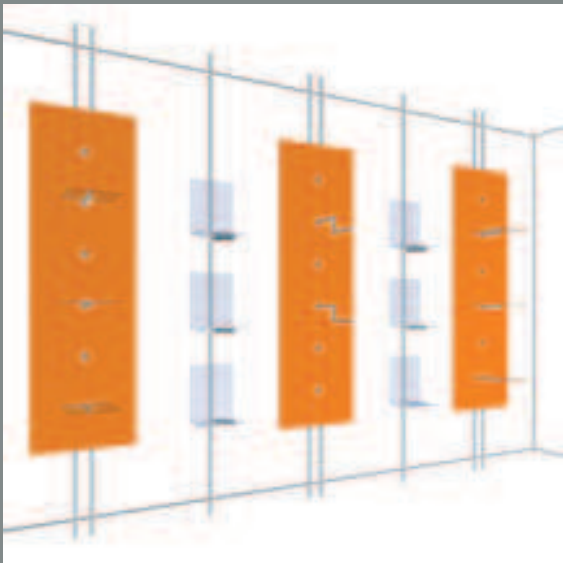
**esempi di utilizzo** examples of use

**tecno** strutture a parete wall structures



**esempi di utilizzo** examples of use

**tecno** strutture a parete wall structures



**esempi di utilizzo** examples of use





CEAN COMPANY S.P.A. VIA DAVIDE ALBERTARIO 3/A 61032 BELLOCCHI DI FANO (PU) ITALY  
TEL. +39 0721 855 046, FAX +39 0721 855 554 WWW.CEANCOMPANY.IT INFO@CEANCOMPANY.IT



stampato in Italia printed in Italy  
© cean company  
aprile 2007 2007 april

art direction **fr** architetti  
progetto project **studio tecnico cean company**  
graphic design **zagù associati**  
foto photos **andrea franceschetti**  
stampa print **grapho 5**

è vietata la riproduzione totale  
o parziale del catalogo  
senza previa autorizzazione  
della Cean Company SpA

total or partial reproduction  
of this catalogue is severely  
prohibited without  
previous permission  
from Cean Company SpA

